



## Portable Color Doppler Ultrasound System

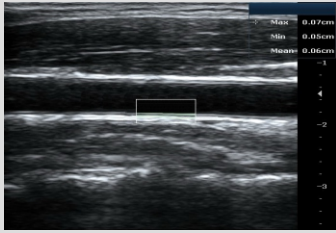
As a new member of AnaSonic portable color Doppler ultrasound family, C3 is a compact and ultra-light ultrasound system which has taken into consideration of all the necessary clinic requirements and needs in order to enable ultrasound users to provide better patient care.



### Features

- 12.1" Medical LCD Display
- Dual Probe Connectors
- IO Ports: S-VIDEO, Printing, LAN, Footswitch, 2 x USB, VGA
- Massive Storage: 500G Hard Disk
- Weight: Less than 5 KGs
- Language: Chinese/English/German/Spanish/French/Russian/Czech
- Built-in Workstation for Patient Data Management
- DICOM 3.0 Supported

# Advanced Technologies & Complete Clinical Application



## Auto IMT Measurement

Automatically to trace the intima, and measure its thickness, this allows you to measure the intima faster and more accurately.

## Triplex

Triplex combines B, C, with PW to help users make diagnosis more convenient and accurate, then improve the efficiency.



## Imaging Technologies

- Spatial Compound Imaging & Frequency Compound Imaging
- Phase-inversion Harmonic Imaging
- HPRF
- Multi-beam Formation Technology
- Multi-focus Emission
- Speckle Reduction Technology
- Convex Expansion Imaging

## Clinical Application

- Panoramic Imaging
- Multiple Imaging Modes: B/C/M/PW/PDI/Directional PDI/Triplex/Anatomic M
- Auto Measurement of Intima-media Thickness (IMT)

## Versatile Probe Options



# AnaSonic

**Shenzhen AnaSonic Bio-Medical Technology Co., Ltd.**

Add: 6F-B Nanfeng Building, Cloud Valley Innovation Industrial Park, Nanshan District, Shenzhen, China.

Tel: 0086-755-2935 3269

Fax: 0086-755-2908 7846

Website: [www.anasonic.com](http://www.anasonic.com)



Version 2.0 April 2018 AnaSonic reserve the final right to explain and decide all information in the brochure